

# Cargo Loading Software

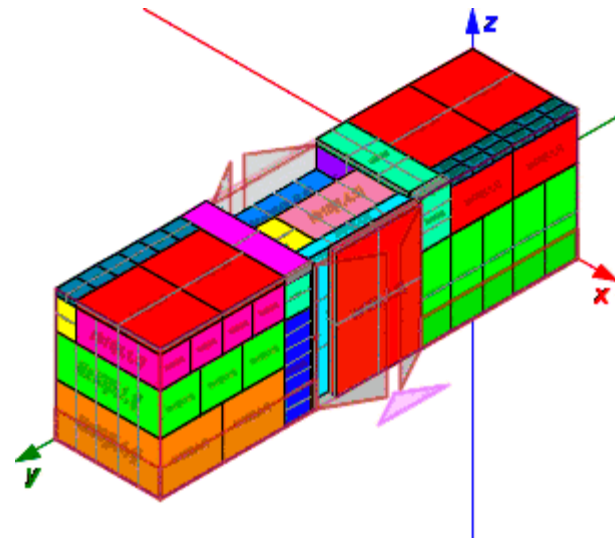
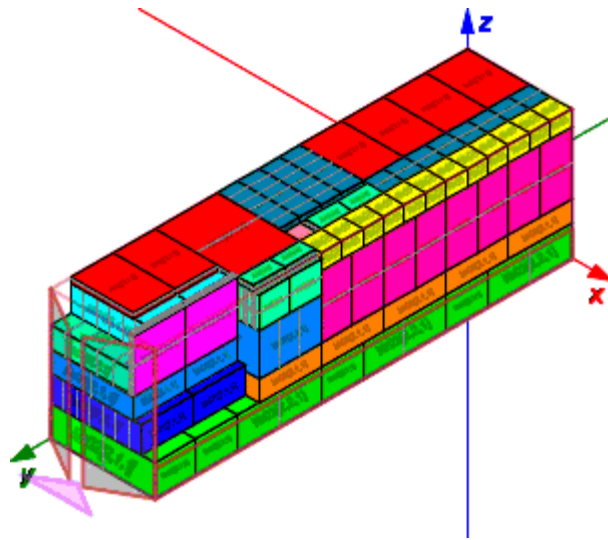
**PACKER  
3D**



# What does Packer3D do



**Packer3D** software calculates step-by-step  
**optimal** loading diagram for Containers,  
Trucks, and Railroad Freight Cars



**How does  
Packer3D  
helps you**





**More dense loadings result  
on savings in transport**



**5-10%**



Optimal selection of a list of  
vehicles for shipping and  
transportation reduces air

 **10-30%**



**Simulate the shipping and  
know if your cargo will  
completely load or not**



**Pre-drawn diagram  
reduces loading time  
of vehicles**

**20-30%**



**Proper installation rules  
reduce damage to goods  
in transit**



**100%**

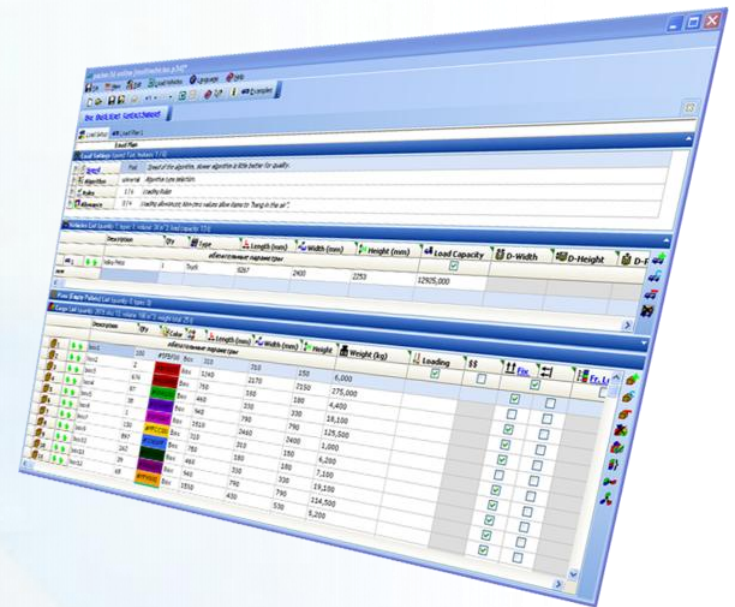
**Guarantee that the cargo  
will load correctly**

How do  
we do it





**We explore your  
business and test your  
latest shipments using  
Packer3D**







**We customize  
Packer3D for  
your business**



**We integrate  
Packer3D into  
your SAP**



# Training your Staff



# Post-Sale Support

# Return on Investment?



**Average Return on  
Investment:**

**3-12 months**



What do our  
customers  
say



# Satisfied Customers - Baltic



Baltika Breweries  
(Carlsberg group)  
is the leader on the  
Russian beer market  
with a market share  
39.7%

"... **Packer3D** effectively manages the daily downloads plans of more than 50 vehicles. The total number of boxes of product exceeds 160'000."

"Only by optimizing 2008, Baltic has reduced logistics costs per output unit per liter of 3.3%"

*Alex Skatin*  
*Logistics Director*





# Satisfied Customers - Gazprom



Gazpromneft  
Lubricants is the 3<sup>rd</sup>  
largest oil producer in  
Russia (2008 data)

“ ... **Packer3D** significantly reduced  
the time of preparation of  
schemes and increased the load  
density.”

*A. Sedov*  
*Head of logistics*





# Satisfied Customers - Agility



Agility is one of the world's leading providers of integrated logistics with more than 22,000 employees in over 550 offices and 100 countries.

“ ... **Packer3D** allows you to visualize and quickly process the co-packing lists of standard loads for more than 100 units of transport per day”

*Artem Pavlikov  
Operator loading trucks*



# Thank You





# Our Offices

## Australia

[www.packer3d.com.au](http://www.packer3d.com.au)  
[accounts@packer3d.com.au](mailto:accounts@packer3d.com.au)  
+61 4 2429 8535

## Belarus

[www.packer3d.ru](http://www.packer3d.ru)  
[info@packer3d.ru](mailto:info@packer3d.ru)  
+375 29 7851115

## Estonia

[www.packer3d.com](http://www.packer3d.com)  
[info@packer3d.com](mailto:info@packer3d.com)

## Russia

[www.packer3d.ru](http://www.packer3d.ru)  
[info@packer3d.ru](mailto:info@packer3d.ru)  
+7 926 5206171

## United Arab Emirates

[www.packer3d.com](http://www.packer3d.com)  
[uae@packer3d.com](mailto:uae@packer3d.com)  
+971-55-935-7803

